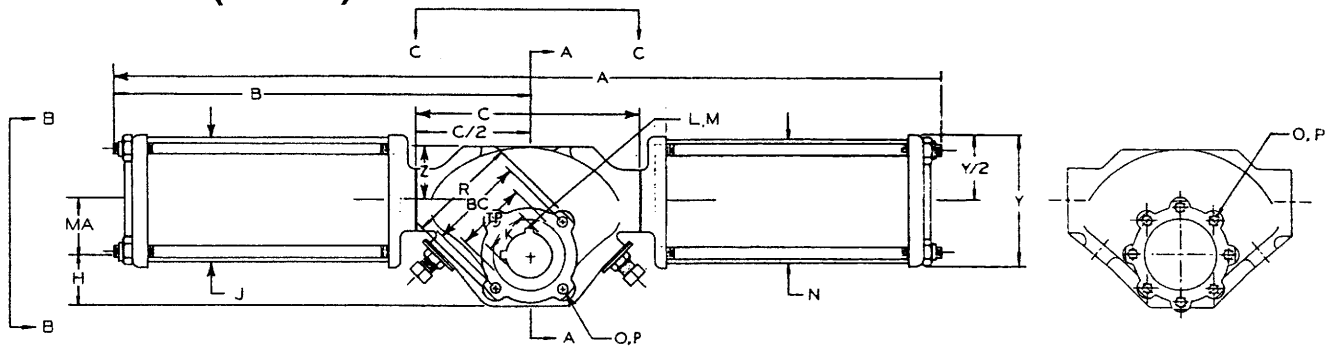


## 2 Cylinder Double Acting Actuator **FIGURE 5** Dimensions (Inches)



**Bottom View**

**Bottom View with  
8 Mounting Holes**

### Standard Letter designations for catalog drawings:

A overall length	H centerline of torque plug to bottom of body	N right cylinder outside diameter	U accessory mounting hole dimension
B center line of torque plug to left end of actuator	I NPT size	O NC threads	V accessory mounting hole NC threads
BC bolt circle diameter	J left cylinder outside diameter	P depth of threads	W accessory mounting hole depth of threads
C body length	K maximum bore diameter	RC rod cover diameter	X core size
D left end cap square	L maximum keyway size	R spigot diameter	Y right end cap square
E total height	M maximum key length	S spigot height	S spigot height
F body width less torque plug extension	MA centerline of torque plug to center line of piston rod	TP torque plug diameter	Z centerline of piston rod to top of actuator
G torque plug extension		T accessory mounting hole dimension (parting line to C/L of hole)	

### DA MODEL NUMBERS

### DIMENSIONS (In Inches)

KEY	26051	26061	26071	33071	26081	26062	33081	26082	33101	33082
<b>A</b>	41.38	41.38	44.00	46.63	44.00	42.63	46.75	48.00	47.63	50.13
<b>B</b>	21.38	21.38	24.00	25.00	24.00	21.38	25.06	24.00	25.88	25.06
<b>BC</b>	4.50	4.50	4.50	5.75	4.50	4.50	5.75	4.50	5.75	5.75
<b>C</b>	11.75	11.75	11.75	13.75	11.75	11.75	13.75	11.75	13.75	13.75
<b>D</b>	5.81	6.63	7.63	7.63	8.63	6.63	8.63	8.63	10.75	8.63
<b>E</b>	8.28	8.69	9.19	10.31	9.69	8.69	10.81	9.69	11.88	10.81
<b>F</b>	6.50	6.50	6.50	7.00	6.50	6.50	7.00	6.50	7.00	7.00
<b>G</b>	0.09	0.09	0.09	0.09	0.09	0.09	0.09	0.09	0.09	0.09
<b>H</b>	2.75	2.75	2.75	3.13	2.75	2.75	3.13	2.75	3.13	3.13
<b>I</b>	(NPT) QTY.	3/8-18 4	3/8-18 4	3/8-18 4	3/8-18 4	1/2-14 8	3/8-18 4	1/2-14 8	1/2-14 4	1/2-14 8
<b>J</b>	5.50	6.50	7.50	7.50	8.50	6.50	8.50	8.50	10.75	8.50
<b>K</b>	2.50	2.50	2.50	3.25	2.50	2.50	3.25	2.50	3.25	3.25
<b>L</b>	.63X.375	.63X.375	.63X.375	.75X.4375	.63X.375	.63X.375	.75X.4375	.63X.375	.75X.4375	.75X.4375
<b>M</b>	3.00	3.00	3.00	3.25	3.00	3.00	3.25	3.00	3.25	3.25
<b>MA</b>	2.63	2.63	2.63	3.38	2.63	2.63	3.38	2.63	3.38	3.38
<b>N</b>	-	-	-	-	6.50	-	8.50	-	8.50	-
<b>O</b>	(UNC) QTY.	1/2-13 4	1/2-13 4	1/2-13 4	3/4-10 4	1/2-13 4	3/4-10 4	1/2-13 4	3/4-10 4	3/4-10 4
<b>P</b>	1.00	1.00	1.00	0.88	1.00	1.00	0.88	1.00	0.88	0.88
<b>RC</b>	1.88	1.88	1.88	2.63	1.88	-	2.63	1.88	2.63	2.63
<b>R</b>	5.43	5.43	5.43	7.01	5.43	5.43	7.01	5.43	7.01	7.01
<b>S</b>	0.20	0.20	0.20	0.20	0.20	0.20	0.20	0.20	0.20	0.20
<b>TP</b>	3.63	3.63	3.63	4.50	3.63	3.63	4.50	3.63	4.50	4.50
<b>T</b>	1.25	1.25	1.25	1.25	1.25	1.25	1.25	1.25	1.25	1.25
<b>U</b>	4.25	4.25	4.25	4.75	4.25	4.25	4.75	4.25	4.75	4.75
<b>V</b>	(UNC) QTY.	1/4-20 2	1/4-20 2	1/4-20 2	1/4-20 2	1/4-20 2	1/4-20 2	1/4-20 2	1/4-20 2	1/4-20 2
<b>W</b>	0.50	0.50	0.50	0.44	0.50	0.50	0.44	0.50	0.44	0.44
<b>X</b>	2.03	2.03	2.03	2.53	2.03	2.03	2.53	2.03	2.53	2.53
<b>Y</b>	-	-	-	-	-	6.63	-	8.63	-	8.63
<b>Z</b>	2.88	2.88	2.88	3.44	2.88	2.88	3.44	2.88	3.44	3.44