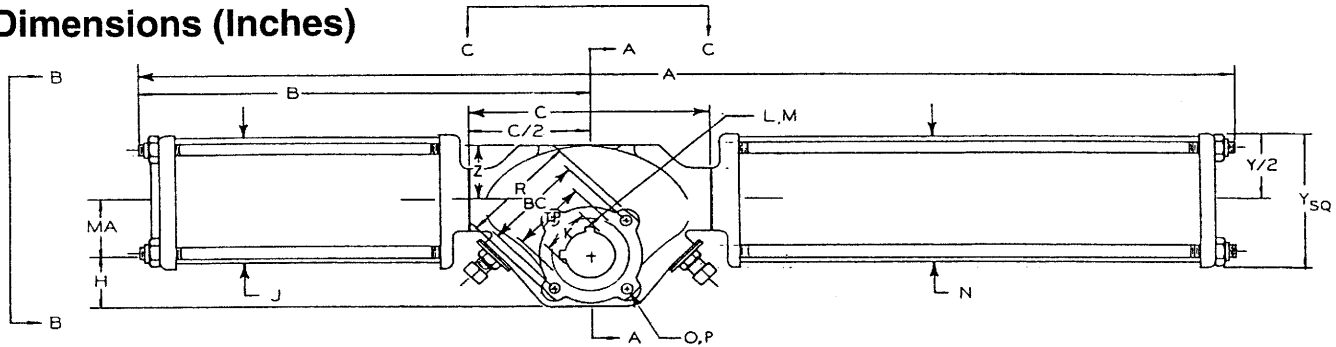


2 Cylinder Spring Return Actuator **FIGURE 7**

Dimensions (Inches)



Standard Letter designations for catalog drawings:

- | | | | |
|--|---|---|---|
| A overall length | H centerline of torque plug to bottom of body | N right cylinder outside diameter | U accessory mounting hole dimension |
| B center line of torque plug to left end of actuator | I NPT size | O NC threads | V accessory mounting hole NC threads |
| BC bolt circle diameter | J left cylinder outside diameter | P depth of threads | W accessory mounting hole depth of threads |
| C body length | K maximum bore diameter | RC rod cover diameter | X core size |
| D left end cap square | L maximum keyway size | R spigot diameter | Y right end cap square |
| E total height | M maximum key length | S spigot height | S spigot height |
| F body width less torque plug extension | MA centerline of torque plug to center line of piston rod | TP torque plug diameter | Z centerline of piston rod to top of actuator |
| G torque plug extension | | T accessory mounting hole dimension (parting line to C/L of hole) | |

SR MODEL NUMBERS

DIMENSIONS (In Inches)

KEY	SPRING	26051SR	26061SR	26062SR	26072SR	33072SR	33082SR	33102SR
A	40	55.63	52.00	54.87	64.88	66.88	71.88	74.50
A	60	55.63	55.63	62.25	64.88	66.88	71.88	74.50
A	80	55.63	55.63	56.88	64.88	66.88	71.88	81.50
A	100	55.63	61.00	56.88	64.88	66.88	71.88	81.50
A	125	55.63	61.00	62.25	71.50	73.50	71.88	87.00
BC	ALL	4.50	4.50	4.50	4.50	5.75	5.75	5.75
B	ALL	20.13	20.13	21.38	24.00	25.00	25.06	25.88
C	ALL	11.75	11.75	11.75	11.75	13.75	13.75	13.75
D	ALL	-	-	6.63	7.63	7.63	8.63	10.75
E	ALL	8.28	8.69	8.69	9.19	10.31	10.81	11.88
F	ALL	6.50	6.50	6.50	6.50	7.00	7.00	7.00
G	ALL	0.09	0.09	0.09	0.09	0.09	0.09	0.09
H	ALL	2.75	2.75	2.75	2.75	3.13	3.13	3.13
I	ALL	(NPT)	3/8-18	3/8-18	3/8-18	3/8-18	1/2-18	1/2-18
	ALL	QTY.	4	4	8	8	8	8
J	ALL	-	-	6.50	7.50	7.50	8.50	10.50
K	ALL	2.50	2.50	2.50	2.50	3.25	3.25	3.25
L	ALL	.63 X .375	.63 X .375	.63 X .375	.63 X .375	.75 X .4375	.75 X .4375	.75 X .4375
M	ALL	3.00	3.00	3.00	3.00	3.25	3.25	3.25
MA	ALL	2.38	2.38	2.38	2.38	2.38	2.88	2.88
N	ALL	5.50	6.50	6.50	7.50	7.50	8.50	10.50
O	ALL	(UNC)	1/2-13	1/2-13	1/2-13	3/4-10	3/4-10	3/4-10
	ALL	QTY.	4	4	4	4	4	4
P	ALL	1.00	1.00	1.00	1.00	0.88	0.88	0.88
RC	ALL	1.88	1.88	-	-	-	-	-
R	ALL	5.433	5.433	5.433	5.433	7.008	7.008	7.008
S	ALL	0.197	0.197	0.197	0.197	0.197	0.197	0.197
TP	ALL	3.63	3.63	3.63	3.63	4.50	4.50	4.50
T	ALL	1.25	1.25	1.25	1.25	1.25	1.25	1.25
U	ALL	4.25	4.25	4.25	4.25	4.75	4.75	4.75
V	ALL	(UNC)	1/4-20	1/4-20	1/4-20	1/4-20	1/4-20	1/4-20
	ALL	QTY.	2	2	2	2	2	2
W	ALL	0.50	0.50	0.50	0.50	0.44	0.44	0.44
X	ALL	2.03	2.03	2.03	2.03	2.53	2.53	2.53
Y	ALL	5.81	6.63	6.63	7.63	7.63	8.68	10.75
Z	ALL	2.88	2.88	2.88	2.88	3.44	3.44	3.44